

Smart Climate Control



LOXONE

Table of Contents

- 03 - The Future of Climate Control
- 04 - Intelligent & Zoned HVAC
- 05 - Radiant Heating & Cooling
- 06 - Mini Split AC Control
- 07 - Air Quality & Ventilation
- 08 - App & Remote Control
- 09 - Programming & Wiring
- 10 - Climate Products
- 11 - Climate Products (cont.)
- 12 - Use Case: The Smartest House in LA
- 13 - Use Case: Classic Car Garage
- 14 - Training & Partnership Program
- 15 - Loxone... More Than Just Climate





The Future of Climate Control is Smart

As customer expectations evolve, demand is growing for climate control systems that deliver more than simple heating and cooling. Homeowners and commercial clients alike expect integrated, automated climate control that adapts to occupancy, weather, and usage patterns while reducing energy waste and improving comfort.

This shift is especially pronounced in high-end markets, where clients aren't just buying equipment; they're buying an experience. They want flawless performance, intuitive control, and measurable efficiency gains; capabilities that traditional thermostats and off-the-shelf "smart" devices simply can't deliver.

But Loxone can.

Instead of piecing together consumer-grade gadgets, Loxone offers a purpose-built automation platform designed for professional multi-zone climate control and advanced scheduling. It empowers you to deliver smart climate solutions that unlock new revenue streams, reduce callbacks, and position your business for sustained growth.

Intelligent & Zoned HVAC

Loxone brings professional-grade intelligence to any ducted and forced-air HVAC system.

Our variable-opening dampers enable more precise temperature control across zones while reducing duct noise and minimizing cycling. And because the system can be remotely monitored and adjusted, you can fine-tune operation, make changes requested by clients, and troubleshoot issues without opening a damper box or tweaking a mechanical component.

Loxone's Touch line of control points act as discreet, multi-point environmental sensors capturing temperature, humidity, and in some versions CO₂ levels. This allows the system to make decisions based on actual room conditions, not a single thermostat mounted in a central hallway. Loxone's self-optimizing logic learns how long each zone takes to heat or cool and automatically adjusts runtimes to maintain comfort while avoiding energy waste.

For integration into existing systems, Loxone provides unmatched flexibility. Loxone interfaces natively with a huge library of third-party climate brands like Belimo, and can also interface with most communication protocols like Modbus and BACnet as well as virtually any equipment brand using digital or analog I/O.





Radiant Heating & Cooling

Radiant/Hydronic systems bring far more complexity than standard forced-air setups, and Loxone is built to manage that complexity with ease.

Pumps, three-way valves, boilers, actuators, manifolds, buffer tanks, and heat exchangers can all be controlled through one unified platform without piecemeal controllers or improvised integrations. Loxone sequences equipment, manages supply temperatures, coordinates zones, and maintains stable operation with precision - reducing troubleshooting and ensuring consistent comfort.

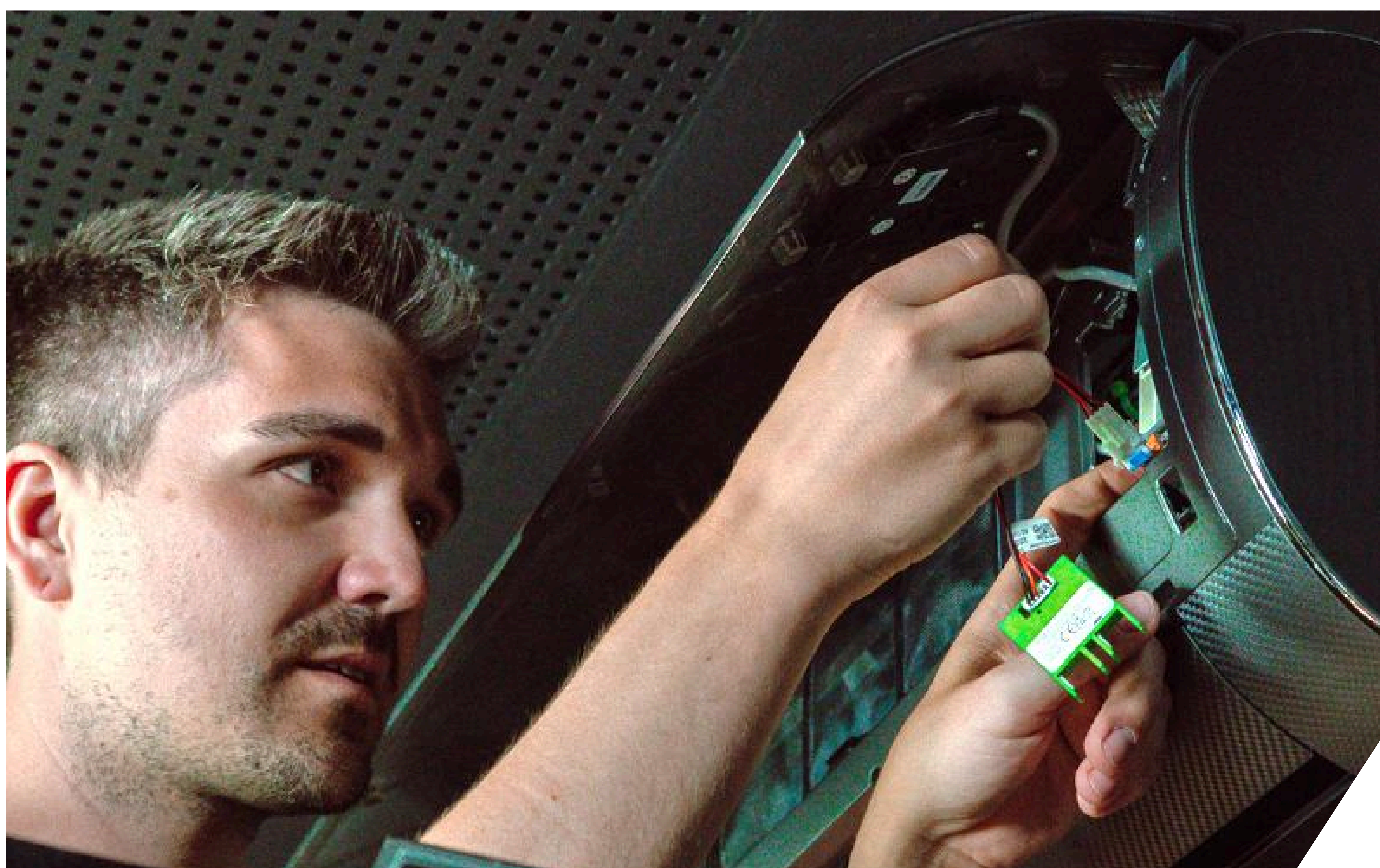
For hydronic systems used in cooling, humidity control is just as critical as temperature, and Loxone handles both with built-in multi-point sensing. This prevents condensation risk while maintaining the comfort levels high-end clients expect. In premium projects where performance and reliability matter most, Loxone gives you the control and confidence to meet those expectations.

Mini Split AC Control

Loxone brings full smart-home intelligence to mini split systems with native integrations for top brands like Toshiba, Daikin, LG, Mitsubishi, and more.

As mini splits units gain traction in luxury settings such as yachts, high-end ADUs and tiny homes, and vacation homes, the ability to integrate them quickly has become a major plus. Loxone mini split integration can be installed and programmed in minutes, giving HVAC pros a fast, reliable way to enhance these systems with minimal effort.

Loxone also makes it easy to extend smart climate control to auxiliary structures like guest houses, workshops, pool houses, or detached garages. With mini splits and Loxone working together, every space becomes part of a singular, remotely monitored system - creating new business opportunities and delivering a premium experience across the entire property.





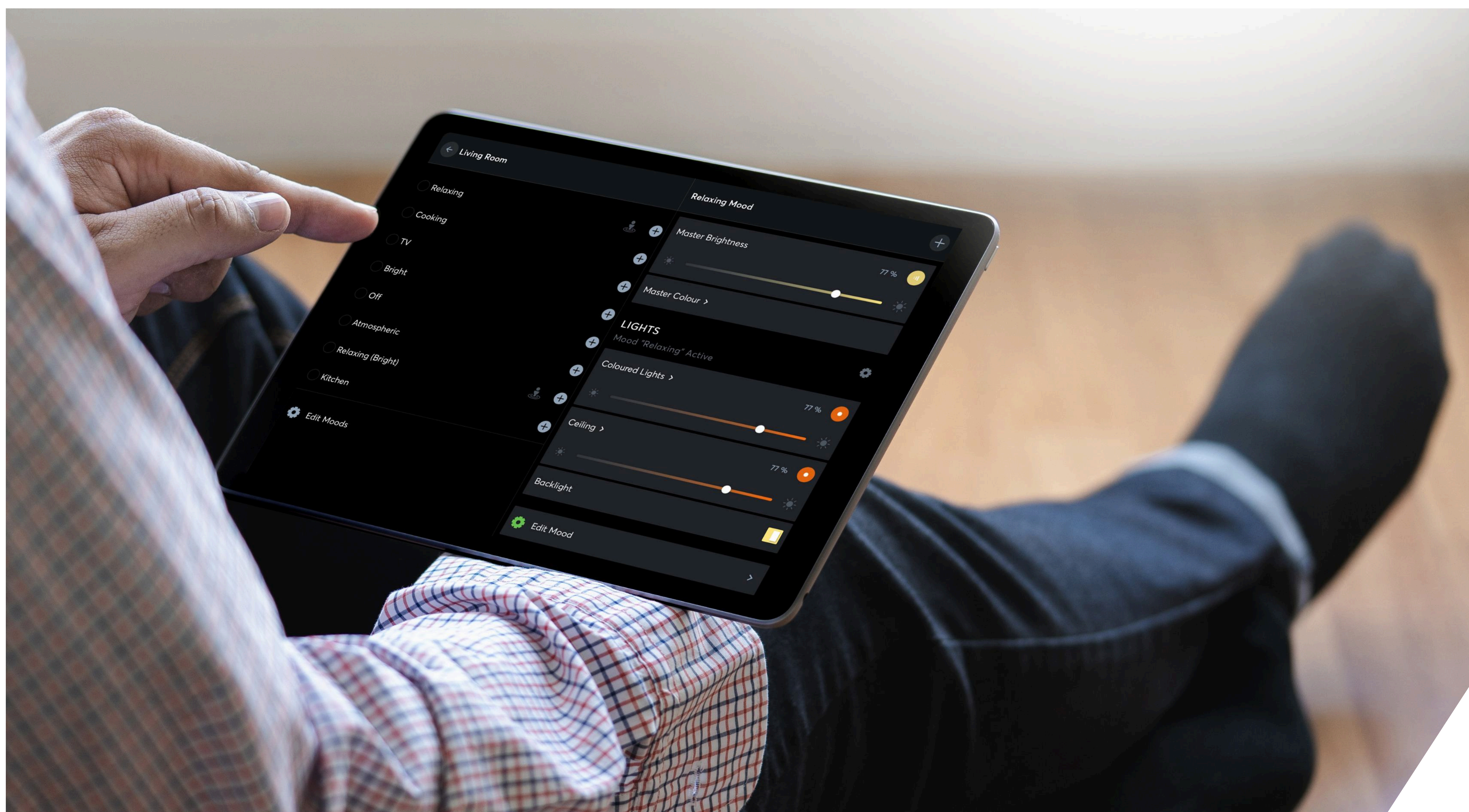
Air Quality & Ventilation

Loxone gives HVAC pros a straightforward way to deliver cleaner, healthier indoor air across homes and commercial projects.

With CO₂ sensing built into select Touch devices and all Room Climate Sensors, the system activates ventilation based on real conditions, not fixed schedules. As buildings adopt tighter envelopes for efficiency, this demand-driven approach prevents stale air without unnecessary runtime.

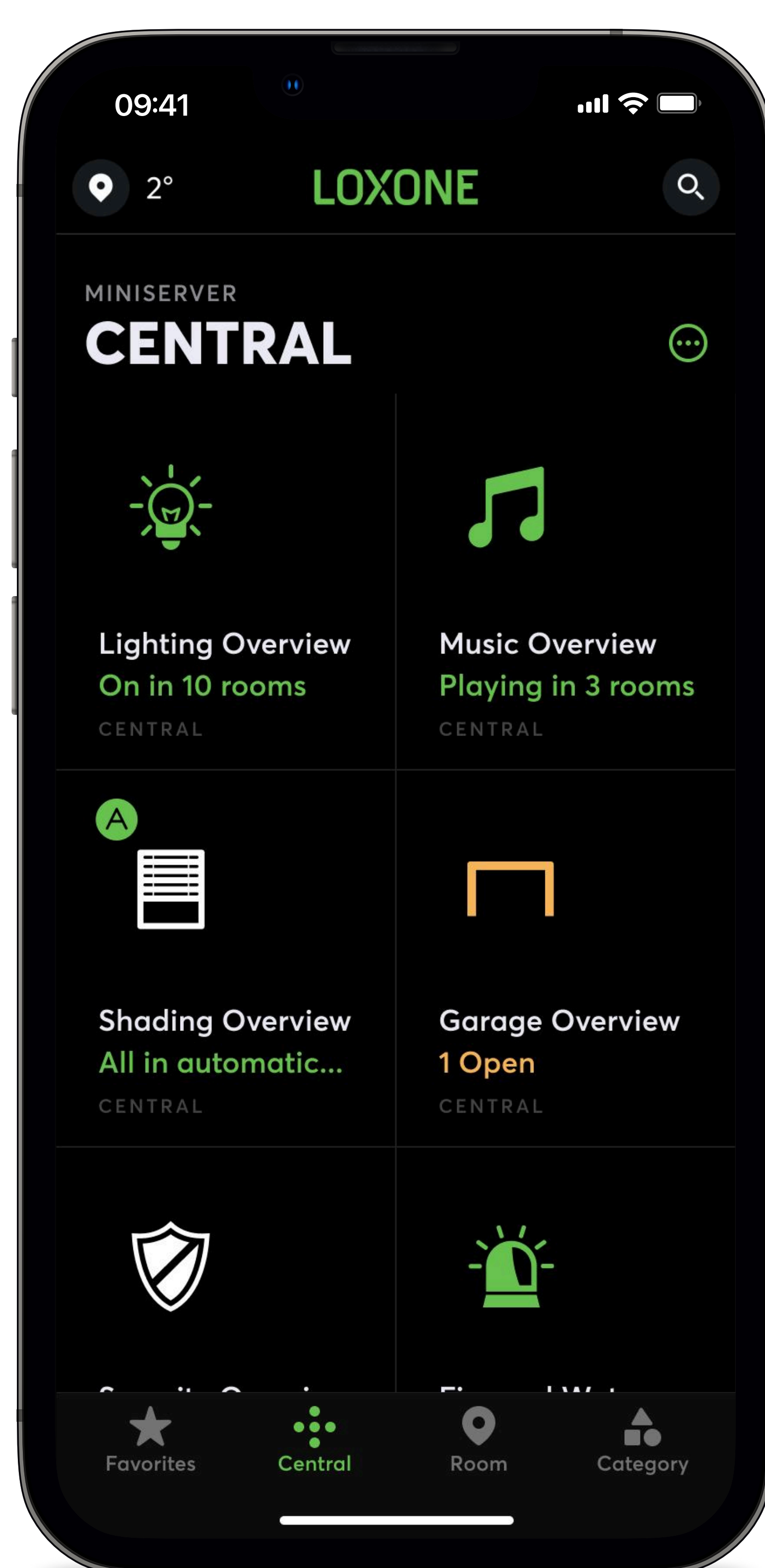
Loxone also coordinates ventilation with heat exchangers to maintain climate stability during fresh-air intake. Fan Control can complement this by improving air circulation as part of the overall ventilation process. By unifying sensing, ventilation, and circulation under one platform, Loxone enables a balanced, efficient air-quality system that adapts automatically.



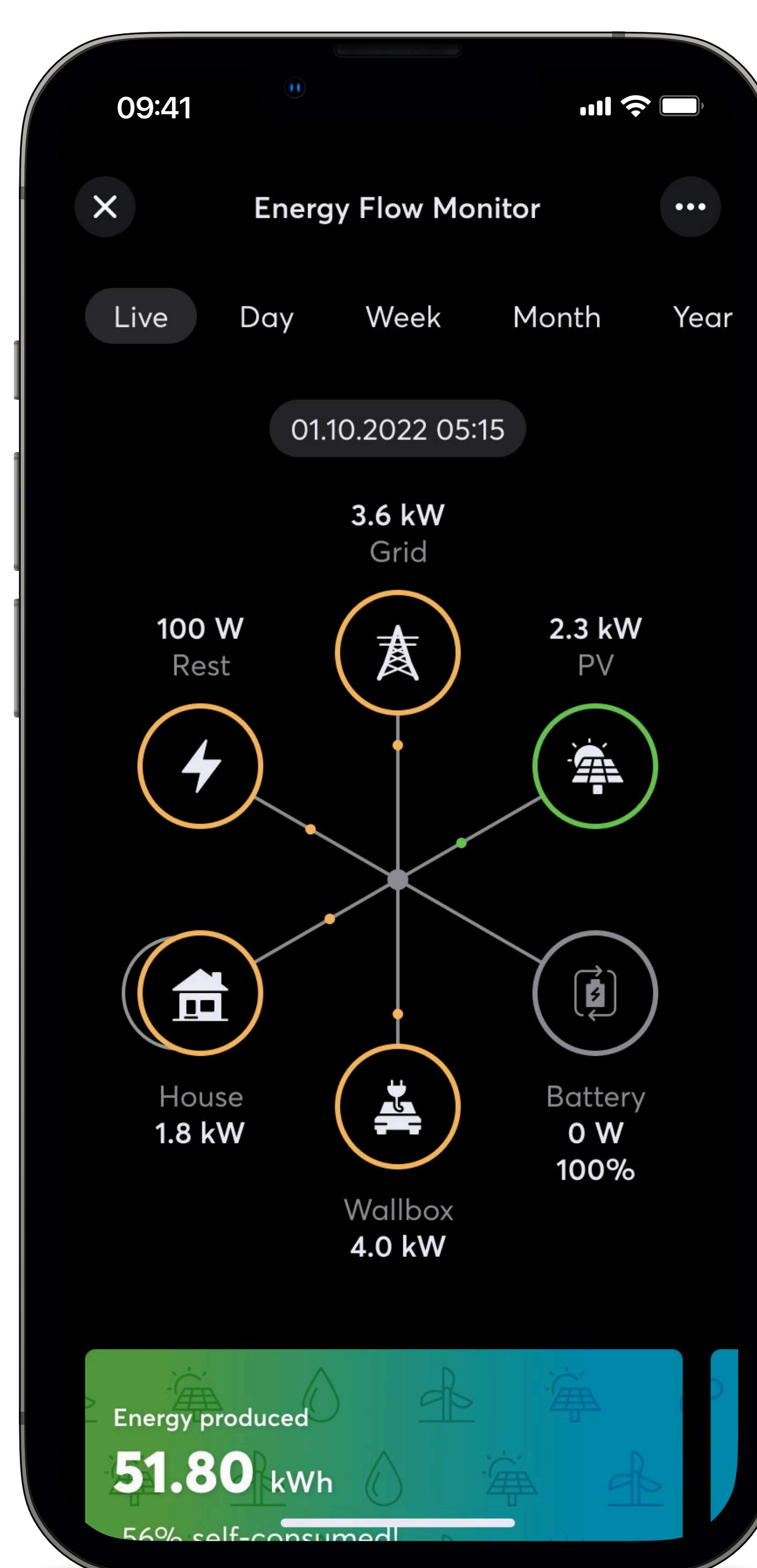


App & Remote Control

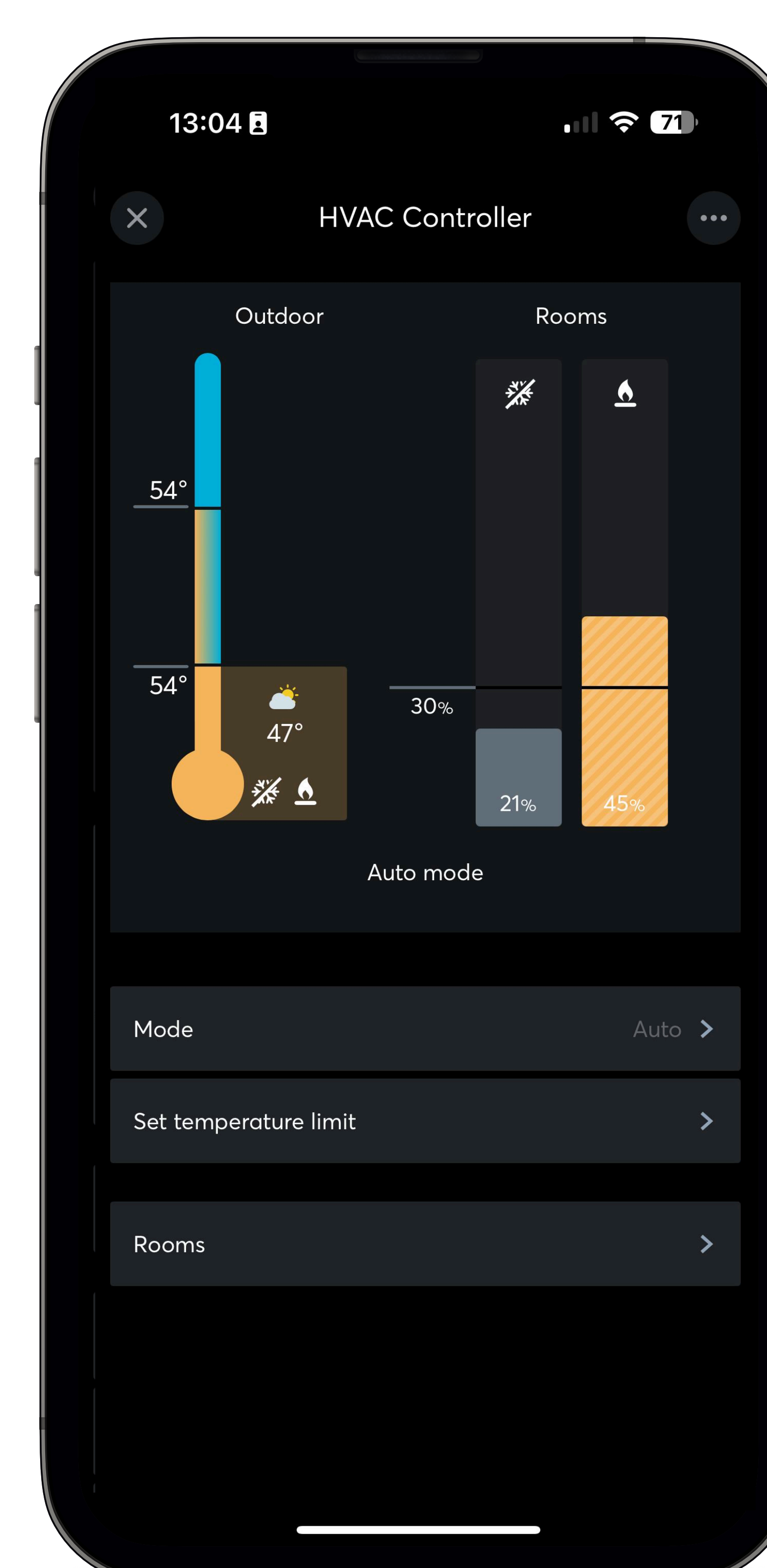
The Loxone app allows users to control and monitor their whole home from the palm of their hand. Easily adjust temperature, turn off lights or arm the alarm system. For times you are away, have peace of mind that your home is safe. The same control you have from your living room is accessible from anywhere in the world.



Whole-home overview
at your fingertips



Monitor your home's
energy usage at all times



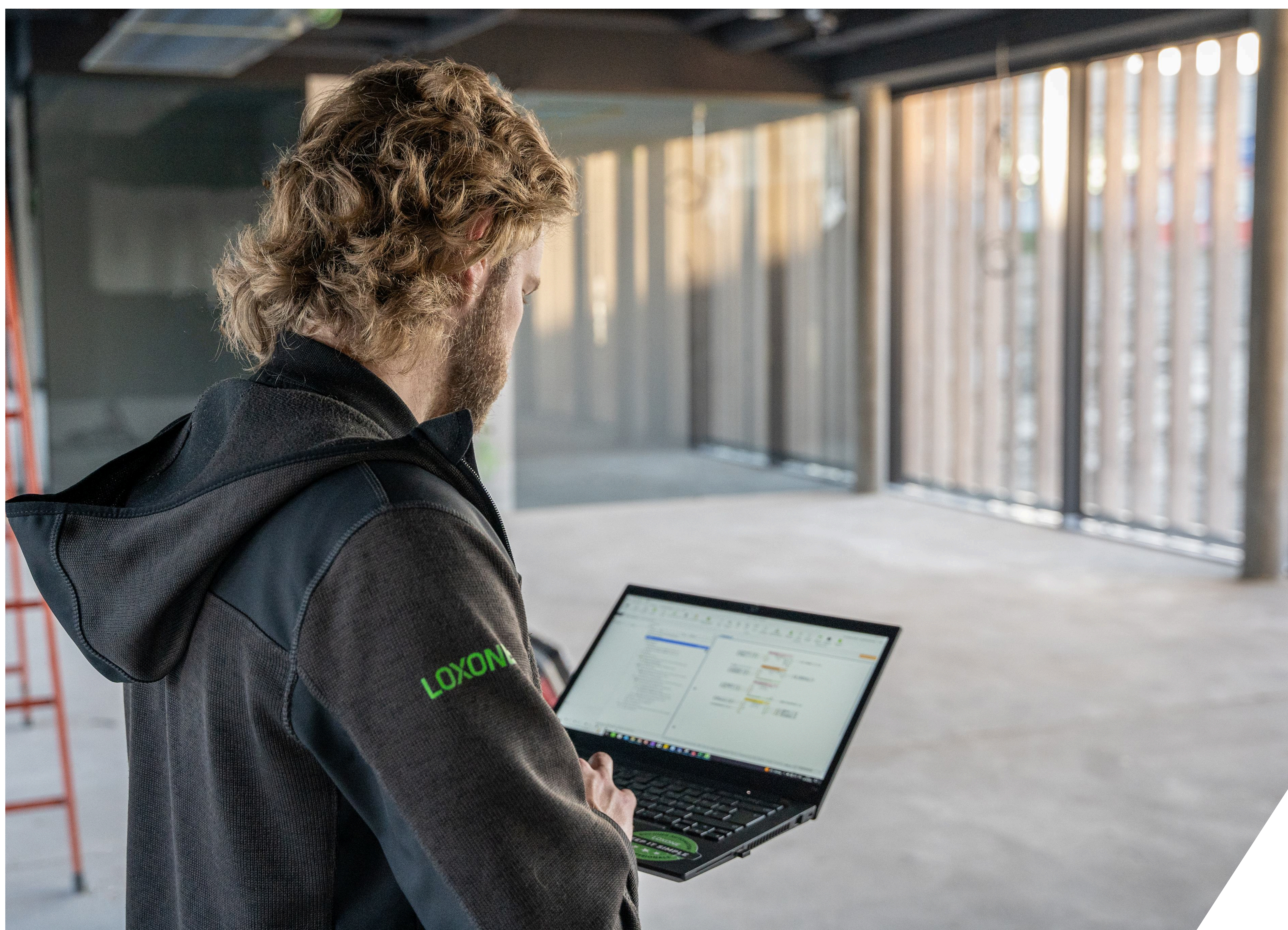
Easily adjust each
room's preferred climate

Programming & Wiring

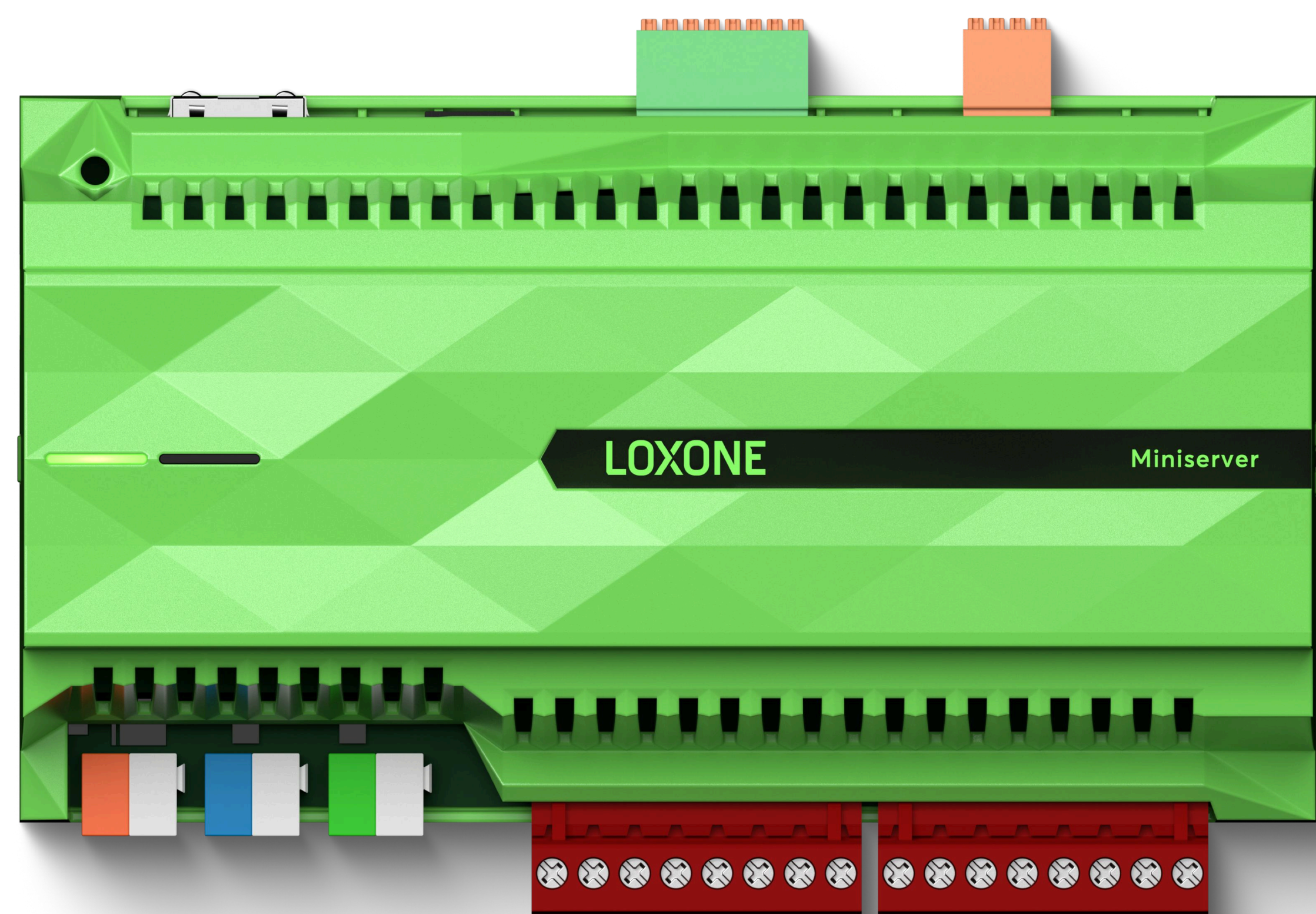
Build powerful climate automation faster with zero coding and the freedom of total installation flexibility.

Setting up smart climate control is a breeze with Loxone Config thanks to its code-free workflow and 100+ prebuilt function blocks for heating, cooling, ventilation, and humidity management. Advanced automation can be configured in minutes, not hours, with proven logic that reduces errors and keeps results and processes consistent across projects.

Loxone's wiring approach delivers the same efficiency. Wired Tree technology uses a single flexible cable that can branch or daisy-chain to dampers, actuators, and sensors without the need for extra conductors, homeruns or rigid layouts. Touch interfaces and other Tree devices can be wired to the same line, while Loxone Air offers wireless expansion and control perfect for retrofits or projects where extra cabling isn't an option.



Loxone Climate Products



Loxone Miniserver

The brains of the operation. Loxone's central control and logic unit is built with reliability and performance in mind. Paired with powerful software tools, the Miniserver accomplishes the remarkable in record time. Available in three varieties – the Miniserver, Miniserver Compact, and Miniserver Go.

HVAC Dampers

Loxone Dampers deliver precise, variable airflow control for more accurate heating and cooling in every zone. Available in multiple standard sizes or custom-made to any duct size, shape, or application.



Touch Controls

Loxone Touch control surfaces combine intuitive control with built-in temperature and humidity sensing, plus an optional CO₂ sensor. Each Touch becomes a discreet climate measurement point, improving accuracy and enabling more responsive control throughout the building.

Fan Control Tree

The Fan Control Tree integrates ceiling fans into your smart climate system, optimizing airflow and quality. It features a 4-step adjustable speed control for precise comfort and unbeatable efficiency.





Valve Actuators

Bring intelligent climate control to hydronic systems with Loxone Valve Actuators for smooth, variable opening and precise flow regulation. Available in wired or wireless versions, each delivering 150 N of force for consistent and responsive operation.

Belimo Interface

Belimo Tree or Air interfaces allows for wired or wireless integration of up to 16 Belimo MP-Bus devices. Optimize actuators, connect sensors and meters, and configure valves with native MP-Bus support for reliable, professional control.

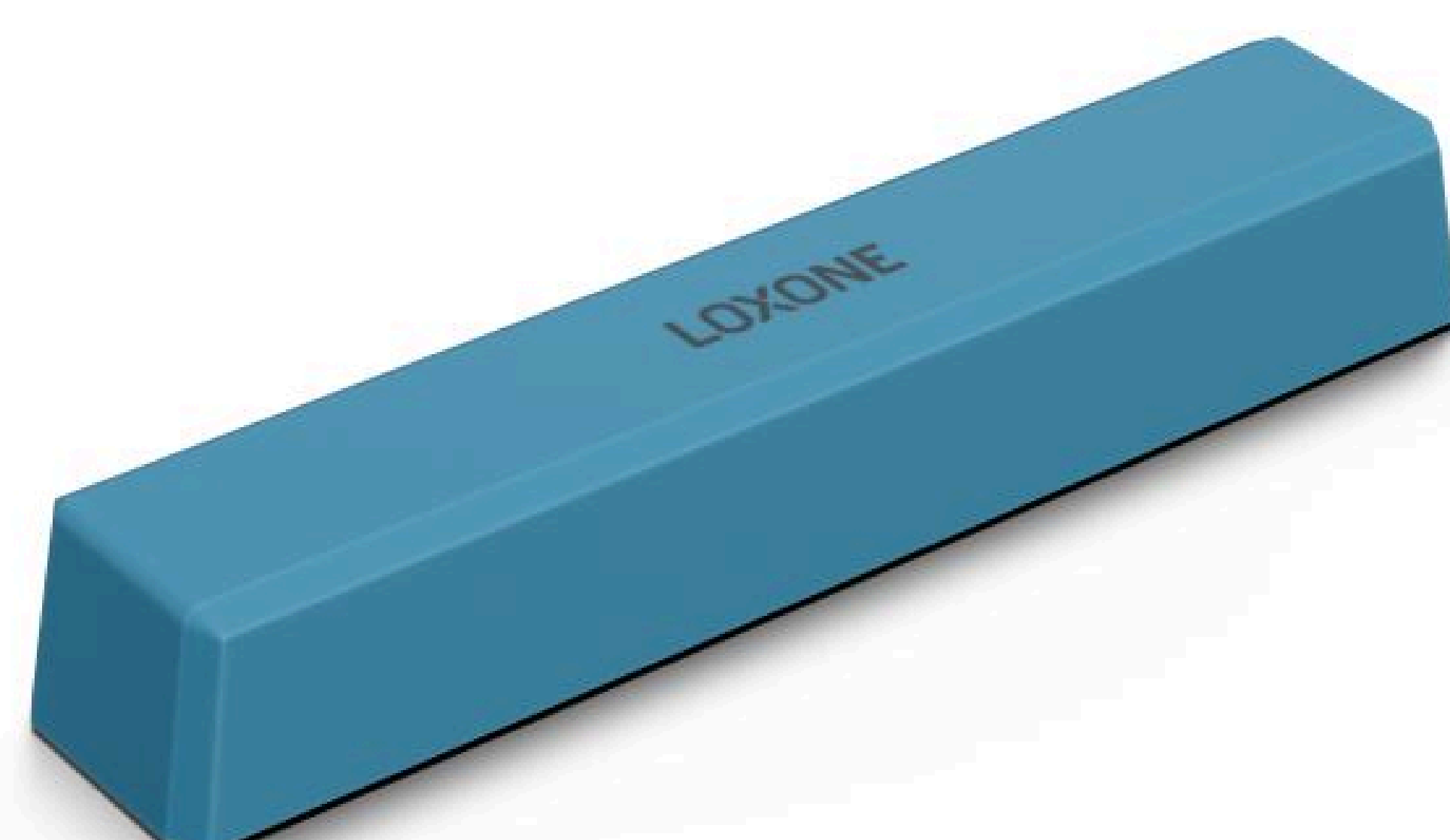
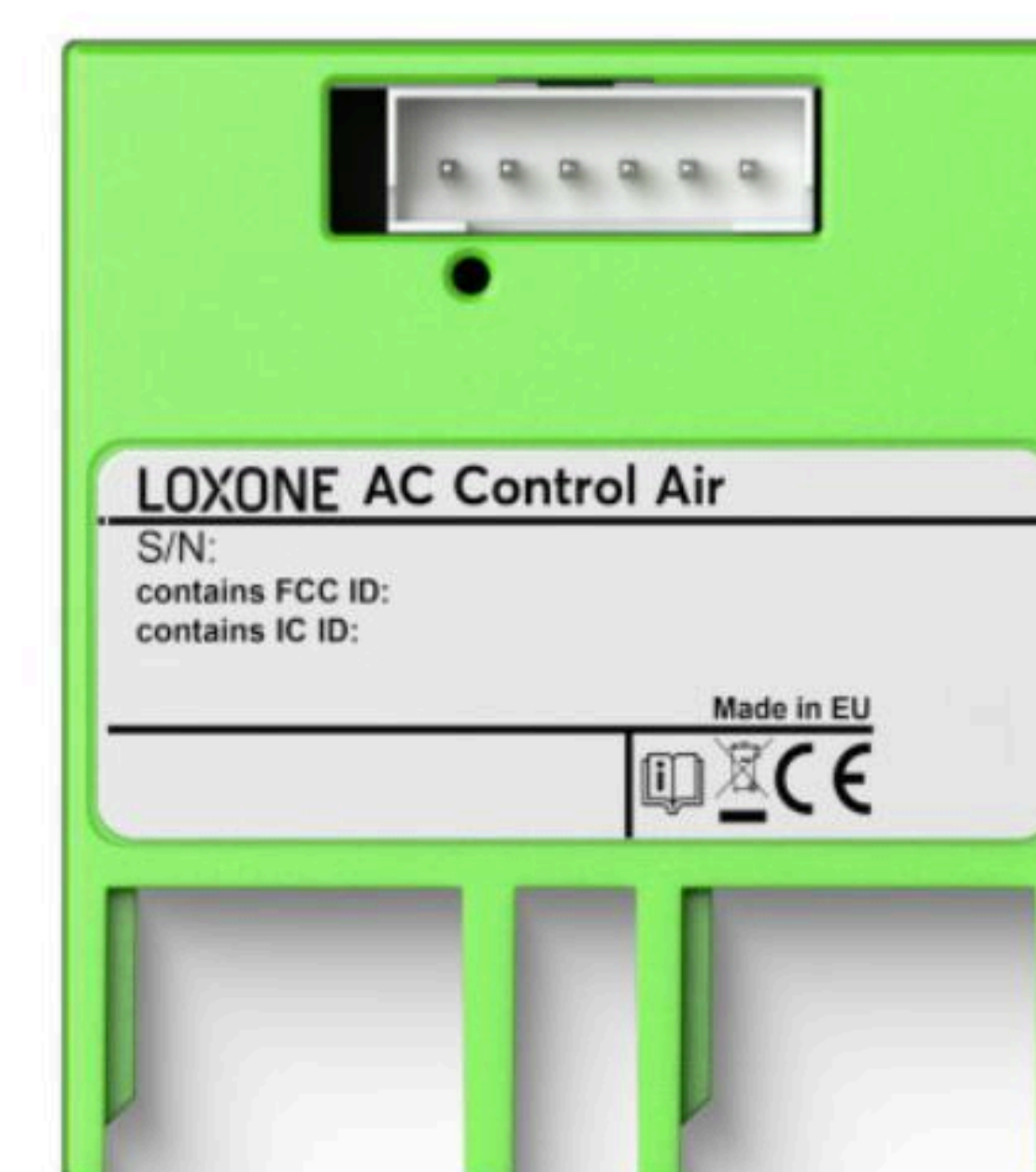


Room Comfort Sensor

Loxone Room Comfort Sensors measure temperature, humidity, and CO₂ with wide operating ranges. Their discreet design comes housed in a sleek, low-profile enclosure in choice of white or anthracite.

Mini Split AC Controllers

Mini Split AC Controllers allow seamless control and automation of units from Mitsubishi, Daikin, LG, and more. They can be installed and programmed in just minutes for fast, reliable smart climate integration.



Water Sensor Air

The wireless Water Sensor Air detects leaks from broken hydronic pipes or excessive condensate, sending instant alerts and automatically shutting off water supply to prevent damage.



The Smartest Home in LA

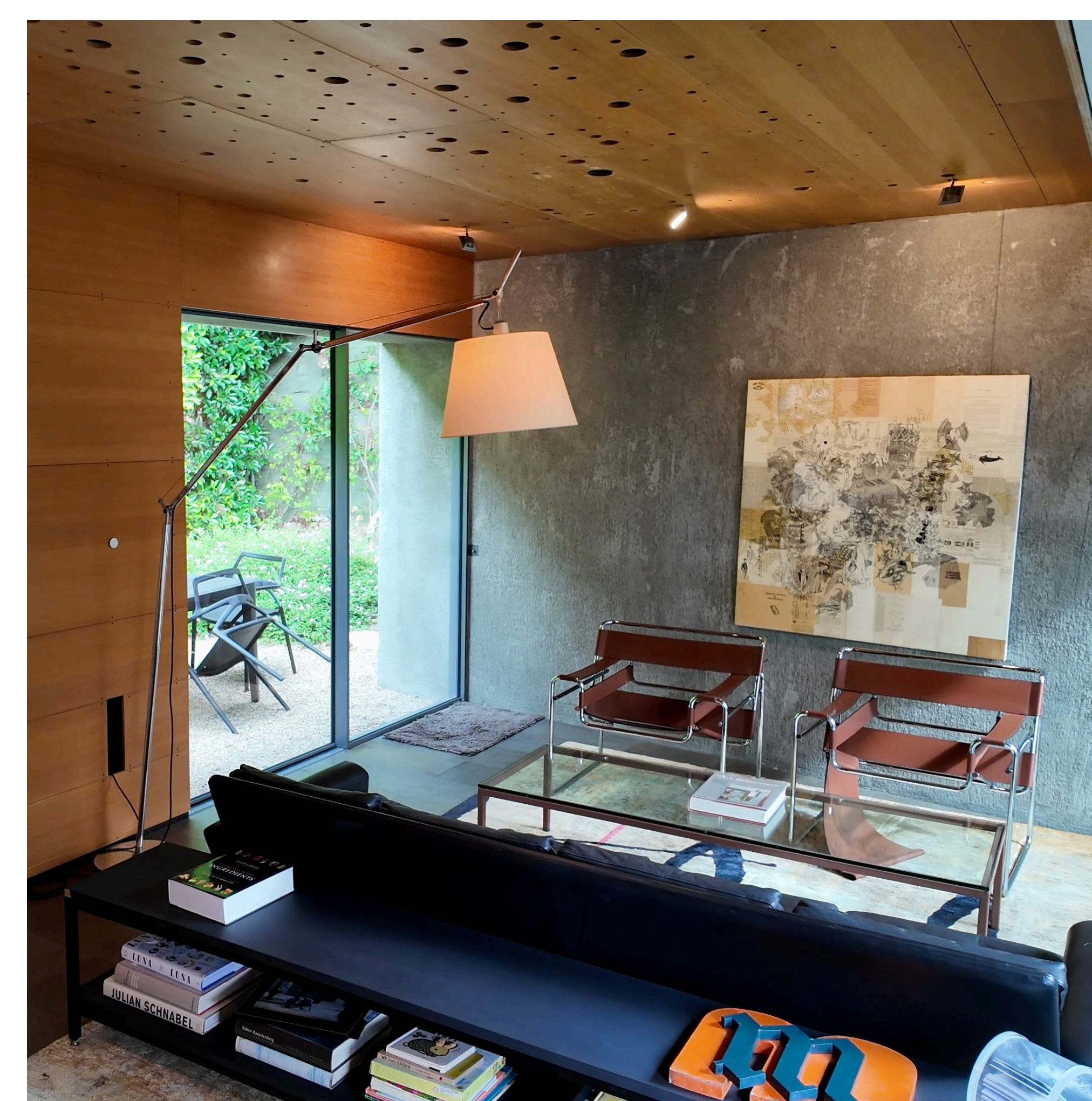
Some projects require more finesse than others - and that was certainly the case for Tree Logic when they integrated radiant climate control, water and pool heating, and energy management into this stunning architect-designed and owned home in Los Angeles. But between Loxone's aesthetic-forward hardware design and Tree Logic's mastery of smart home automation, the end result is a truly intelligent home powered by tech that compliments, rather than contrasts with, the homeowners design vision.

"The nice thing about Loxone is we can add more functions at anytime. We really like the system from both a user standpoint and an integrators standpoint."

- Jeff Landreth, Tree Logic Energy



More Information





Coleson Classic Car Collection

The Coleson Garage maintains an ideal environment for their prized car collection through precise, automated climate control powered by Loxone. Integrated temperature and humidity sensors constantly adjust heating and cooling to protect vehicles year-round. Energy-efficient LED lighting highlights the display while Loxone control points manage audio and garage door functions. To safeguard the collection, every door and window features Loxone contact sensors that trigger instant alerts and identify the exact entry point.

"Climate control is about more than just comfort - it's also a vital aspect of valued asset protection."

- Nick Mensack, Lead Loxone Partner Coach



More Information



PARTNER REGISTRATION



Become a Registered Loxone Partner free of charge to unlock training and support options to start you on the road to success.

Registered partners **receive a 10% discount** on product purchases, which increases between 17-27% as you advance to Silver, Gold & Platinum status.

Registration also grants you access to the Loxone Partner Portal where you'll find a wealth of educational resources and a library of function blocks for use in the Loxone Config commissioning platform.

FOUNDATION TRAINING

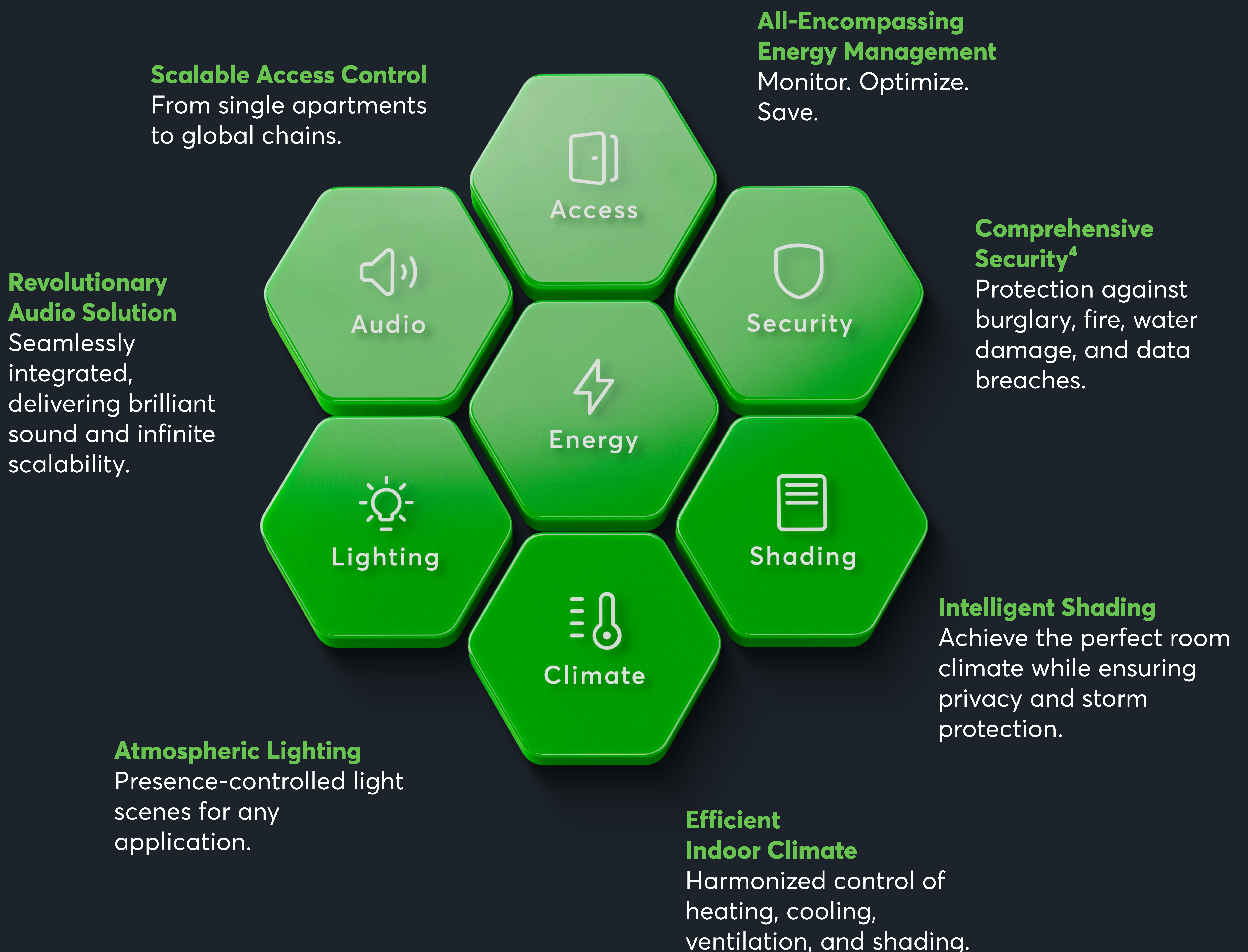


Learn the basics of installing and configuring Loxone solutions for smart homes and buildings in only 4 days. After the Foundation Training, you will be prepared to:

- » Install and program Loxone solutions
- » Simplify wiring, configuration and more in every project
- » Receive marketing guidance
- » Sell with confidence to meet your clients' needs
- » Receive Partner Coach support for all projects
- » Join hands-on workshops with the latest Loxone technology

Limitless Function From a Single Source

From A for Audio to Z for Zoned Heating Control, the Miniserver handles a wide range of tasks, prioritizing security, convenience, and energy efficiency. Its highly flexible and scalable design ensures it can be tailored to meet the unique requirements of any project.





Follow us
#loxone